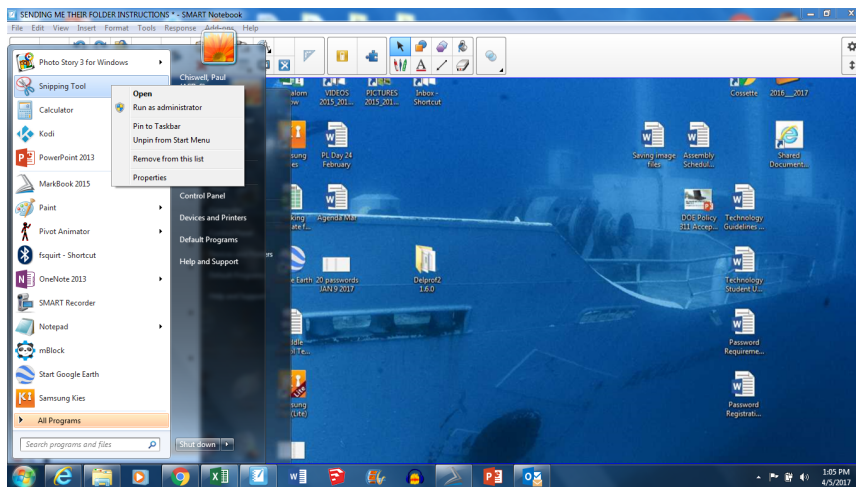


CLICK ON START

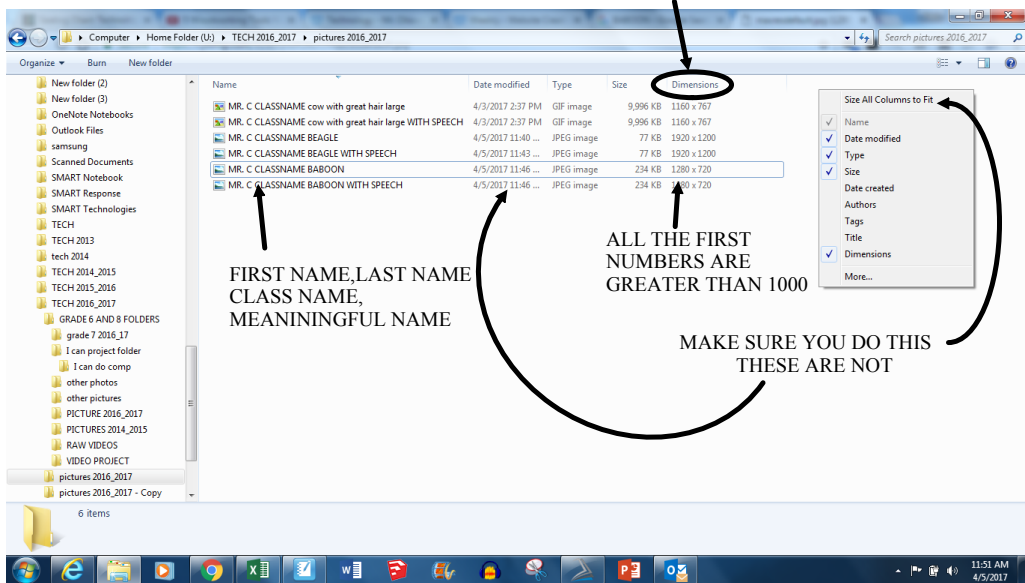
RIGHT CLICK ON SNIPPING TOOL

CLICK ON PIN TO TASK BAR



GO TO YOUR TECH FOLDER
MAKE SURE IT LOOKS LIKE THIS

DON'T FORGET THE DIMENSION COLUMN



CLICK ON THE SNIPPING TOOL
TAKE A FULL SCREEN SNIP OF YOUR PICTURE FOLDER
SAVE THE IMAGE IN YOUR TECH 2016_2017 FOLDER
E-MAIL ME THE FULL SCREEN SNIP INSERTED IN THE E-MAIL

